

For Online Transmission of Question Papers: - Make details to be available at web site

Sr. No.	Infrastructure facilities at College	Yes/No
Strong Room:		
1	It must have Single Door Entry /Exit (with Safety Door/Grill for windows)	Yes
2	Minimum Area shall be 20x20sq.ft.	Yes
3	Adequate Steel Almirah /Cupboard for storage of Answer Books.	Yes
4	C.C.T.V. Camera with recording facility that covers entire area or Downloading and Printing of online transmission of Question Paper process.	Yes
5	Latest version Computer (Minimum4) and Printer (Minimum4) with Inverter facility, MSOffice, PDF Reader, Winrar or Win zip.	Yes
6	Dual Internet service, Primary with 1:1 dedicated line of 100 maps speed by class 'A' ISP, and alternate line with 1 : 1 dedicated line of 50mpbs speed, by an another Class 'A' ISP to ensure uninterrupted Downloading facility, with 2 (two) static IP's, Internet Dongle.	Yes
7	Adequate Number of Paper Rims for printing Question Papers.	Yes
8	One Photo copy Machine, UPS Backup.	Yes
Scanning Room:		
9	Separate Scanning Room for scanning Answer Books after end of Examination Session under CCTV Surveillance. (Laptop and Scanners will be provided by the University Appointed Agency)	Yes
10	Dual Internet service, Primary with 1:1 dedicated line of 100 mbps speed by class 'A' ISP, and alternate line with 1 : 1 dedicated line of 50 mbps speed, by an another Class 'A' ISP to ensure uninterrupted Downloading facility, with2(two) static IP's, Internet Dongle.	Yes

To Set Up DEC for On screen Evaluation of Answer Books:

Sr. No.	Infrastructure facilities at College	Yes/No
1	Computers (20) with latest licensed Operating System Software (OSS) with antivirus and firewalls to provide all lock, work station with Computer charts and key board tray.	Yes
2	Wiring and Networking (with Raw Power Supply and UPS) and one Printer per DEC	Yes
3	Air conditioners, Biometric system, CCTV installation, Restrooms And 24x7 security.	Yes
4	Collapsible gate for the main entrance with Name board and locking Facility.	Yes
5	Dual Internet service, Primary with 1:1 dedicated line of 100 mbps speed by class 'A' ISP, and alternate line with 1 : 1 dedicated line of 50mpbsspeed,byananotherClass'A'ISPtoensureuninterrupted Downloading facility, with2(two) static IP's.	Yes
6	Appointment of one Professor as a Examination Co-ordinator to Co-ordinate this Online process.	Yes
7	Separate Evaluation Room for Evaluating the Answer Books under CCTV Surveillance	Yes

Here by I declare all relevant document uploaded are clear and visible on web site & are true as per my knowledge & Belief

Date : 07/01/2026

(Signature)
Principal
Rajashri Shahu College of
Nursing, Washim 444505

Strong Room



Vrshinthe
Principal
Rajashri Shahu College of
Nursing, Washim-444505

Strong Room



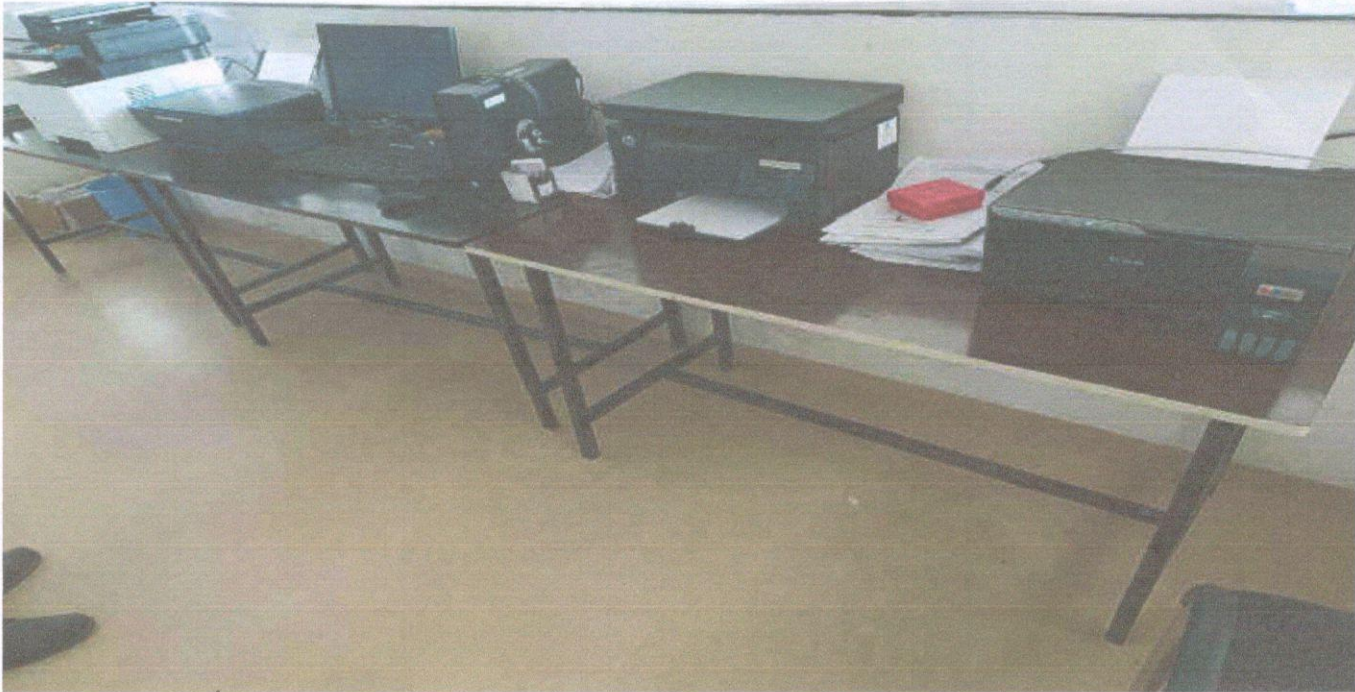
Vishinhe
Principal
Rajashri Shahu College of
Nursing, Washim-444505

CCTV Recording



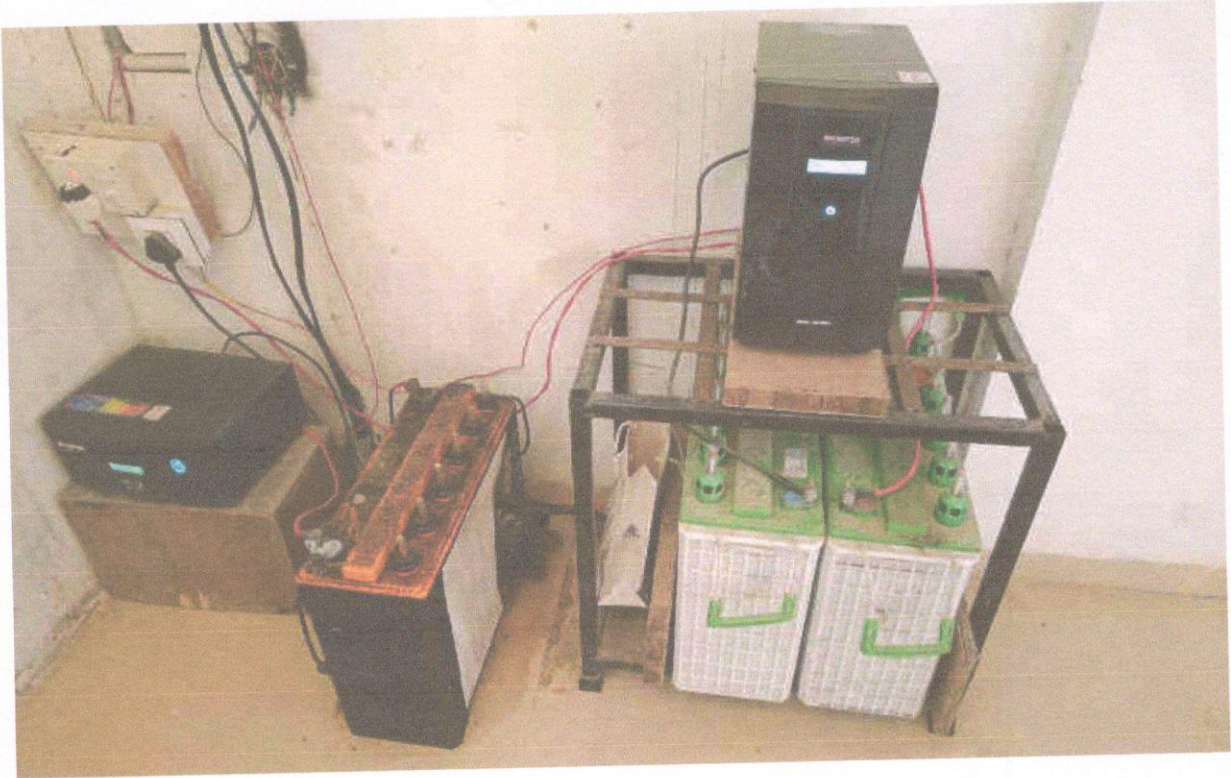
Vishinethe
Principal
Rajashri Shahu College of
Nursing, Washim-444505

Computer & Printers



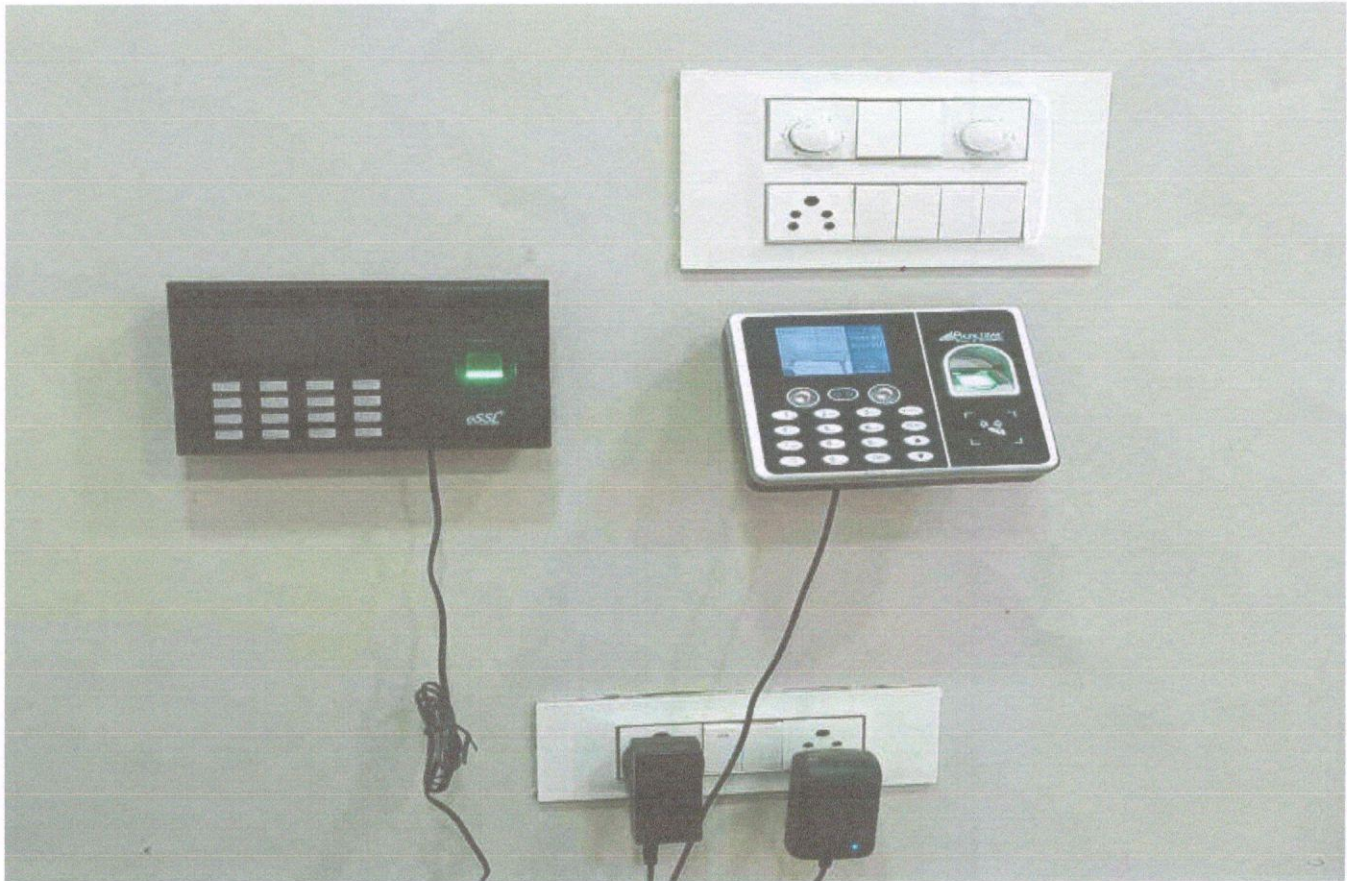
Vashimelke
Principal
Rajashri Shahu College of
Nursing, Washim-444505

UPS Backup



Vishinelle
Principal
Rajashri Shahu College of
Nursing, Washim-444505

Biometric



V. Shinde
Principal
Rajashri Shahu College of
Nursing, Washim-444505